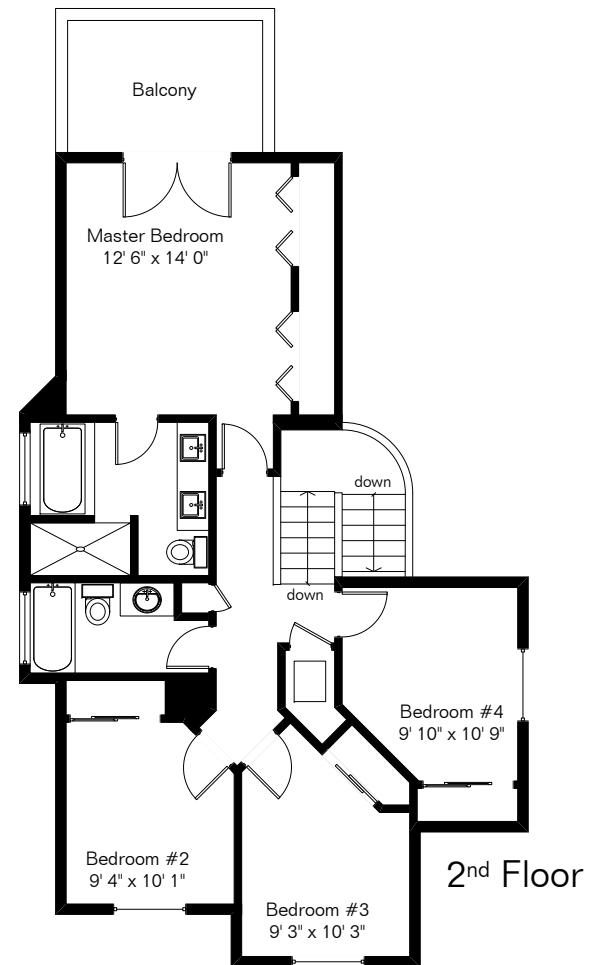
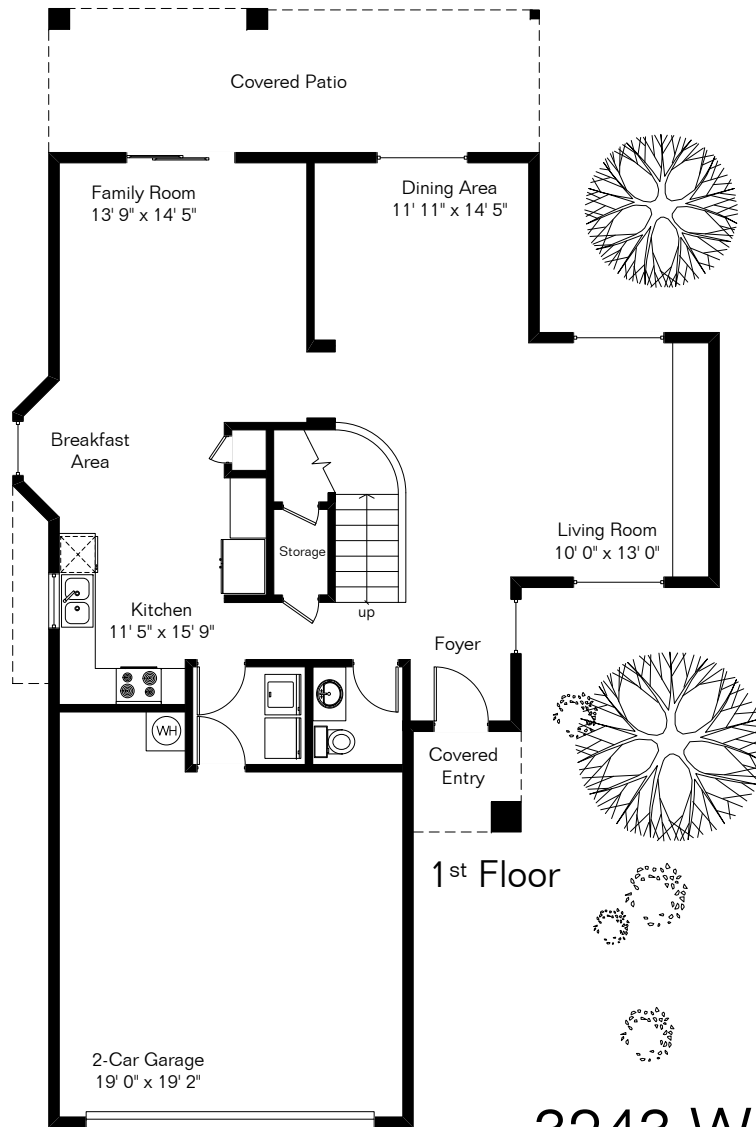
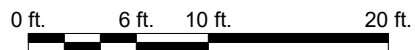


The square footages and room size information are deemed to be reliable but are not guaranteed and should be independently verified.

Living Area 1,976 Sq Ft
Garage 425 Sq Ft
Covered Patio 218 Sq Ft



Site Visit April 2018



Copyright 2018 Floor Plans First! LLC
All Rights Reserved.

3243 W Orbison St

Presented by Pam Treece
Long Realty Company
(520) 275-2664

www.FloorPlansFirst.com

Toll Free (877) 887-1500
Voice (520) 881-1500
Fax (520) 791-7701

Floor Plans First!
See the Floor Plan First!